

Celebration Florida Friendly Pattern Book

Celebration, Florida



Contents

- Introduction _____ Page 3
- Using the "Florida Friendly"® Pattern Book _____ Page 4
- What it is to be "Florida Friendly"® _____ Page 5
- Inventory & Analysis _____ Page 6
- Concept Landscape Designs
 - Townhome _____ Page 7 - 8
 - Cottage _____ Page 9 - 10
 - Bungalow _____ Page 11 - 12
 - Village _____ Page 13 - 14
 - Estate _____ Page 15 - 16
- "Florida Friendly"® Plant List _____ Page 17 - 20
- Sources _____ Page 21



Introduction

The Celebration “Florida Friendly”® Pattern Book is designed to familiarize Celebration residents with “Florida Friendly”® landscape principles, and to serve as a design guide for a “Florida Friendly”® approach to landscape design that meets Celebration landscape requirements for residential landscapes.

Human activity, such as farming, ranching, animal development, and chemical application has significantly reduced many of the Earth’s native plant communities. The loss of these plant communities has led to species loss and endangered natural habitats, its caused soil erosion, and has reduced the genetic diversity necessary for a stable, balanced ecosystem.

While preserving natural stands of native plants is important, you can help reestablish native & low water-use plant communities in your yard and community by choosing to landscape with a “Florida Friendly”® approach to your landscape design. Regardless of the scale of the project, you can help conserve water and preserve & protect other natural resources while restoring and celebrating Central Florida’s regional character.

Establishing a “Florida Friendly”® landscape in your garden usually requires a bit of work. However, once a “Florida Friendly”® landscape is designed, installed & maintained according to the nine “Florida Friendly”® principles, and plants become established, you will see not only savings in time, energy, and money, but also an aesthetic that is unique to Central Florida.

Your plan doesn’t have to be elaborate and it can be installed in phases as money and time permit. If you should need assistance, a professional landscape designer or landscape architect with “Florida Friendly”® design experience could be employed to help guide you along. Whether it’s incorporating a “Florida Friendly”® landscape design into an existing landscape or starting completely from scratch, above all have fun.



Using the Celebration “Florida Friendly”® Pattern Book:

- Review the 9 principles of “Florida Friendly”® to familiarize yourself with the overall goals to keep in mind while planning your yard’s landscape layout.
- The “Inventory Analysis” page describes the yard characteristics you should consider before you start thinking about what plants go where.
- The zone template illustrates what types of plants are suitable for the typical landscape areas that you will define on your plan, based on lot type.
- A landscape plan example with a variety of plant options is provided for inspiration and guidance.

(Please note that according to Celebration’s landscape standards there is no requirement to follow our suggestions of design for the private zone, i.e the backyard of your lot, but we believe if you do you won’t regret it.)

- Refer to the Celebration “Florida Friendly”® plant list to select the appropriate plant for your yards unique characteristics.



What it is to be "Florida Friendly"®, The Nine Principles

1. Right Plant, Right Place

This encompasses placing plants that thrive in full sun should be planted in full sun, and vice-versa for plants that do well in the shade.

2. Water Efficiently

Typically, outdoor water use accounts for up to 50 percent of water consumed by households. You can reduce your outdoor water consumption by taking a few simple steps. So tighten those taps, eliminate those leaks and use water wisely.

3. Fertilize Appropriately

Plants have varying nutrient needs, depending on the species, the age of the plant, and location. Supplemental nutrients can be provided to plants by applying fertilizers in the form of composted organic material, packaged fertilizer, or a specific mineral such as iron.

4. Mulch

A mulch layer around trees, shrubs, & planted beds provides many benefits such as:

- keeping soil and plant roots warmer in winter & cooler in summer.
- slowing evaporation and reducing the need to water plants.
- inhibiting weed germination and growth.
- giving plant beds a uniform & neat arrangement, also, color & texture compliments plantings.
- improving soil aeration, structure, & drainage through decomposing organic materials.
- lastly, protecting plant material from trimmers or mowers by providing a barrier.

5. Attract Wildlife

Bring your yard to life by providing water, food, & shelter for birds, butterflies, and other creatures.

6. Manage Yard Pests Responsibly

The way that you plant & maintain your yard either discourages pests or throws out the welcome mat for them. Keep your plants healthy, conduct regular scouting, be easy on water and fertilizer, & encourage beneficial insects that will help manage the unwanted pests.

7. Recycle

Landscape maintenance activities like mowing, pruning, & raking generate yard waste that you can compost or mulch, recycling valuable nutrients.

8. Reduce Storm-water Runoff

Be mindful of the decisions you make in your yard or garden. They can directly influence the health of Florida's waters by becoming part of the stormwater runoff. These are things like exposed soil, landscape debris, oil, fertilizers, and pesticides that might be apparent in your yard.

9. Protect the Waterfront

Florida is covered with water and its streams, rivers, lakes, freshwater springs and coastline are all interconnected. Even though you may not live on or nearby a water body, the land you do live on can affect the health and well being of any water source.

No matter where you live, surface water that leaves your landscape as runoff, (due to rain or overwatering), will eventually drain into a water body. This, together with any fertilizers and pesticides, can be damaging to Florida waters.

http://fyn.ifas.ufl.edu/homeowners/nine_principles.htm



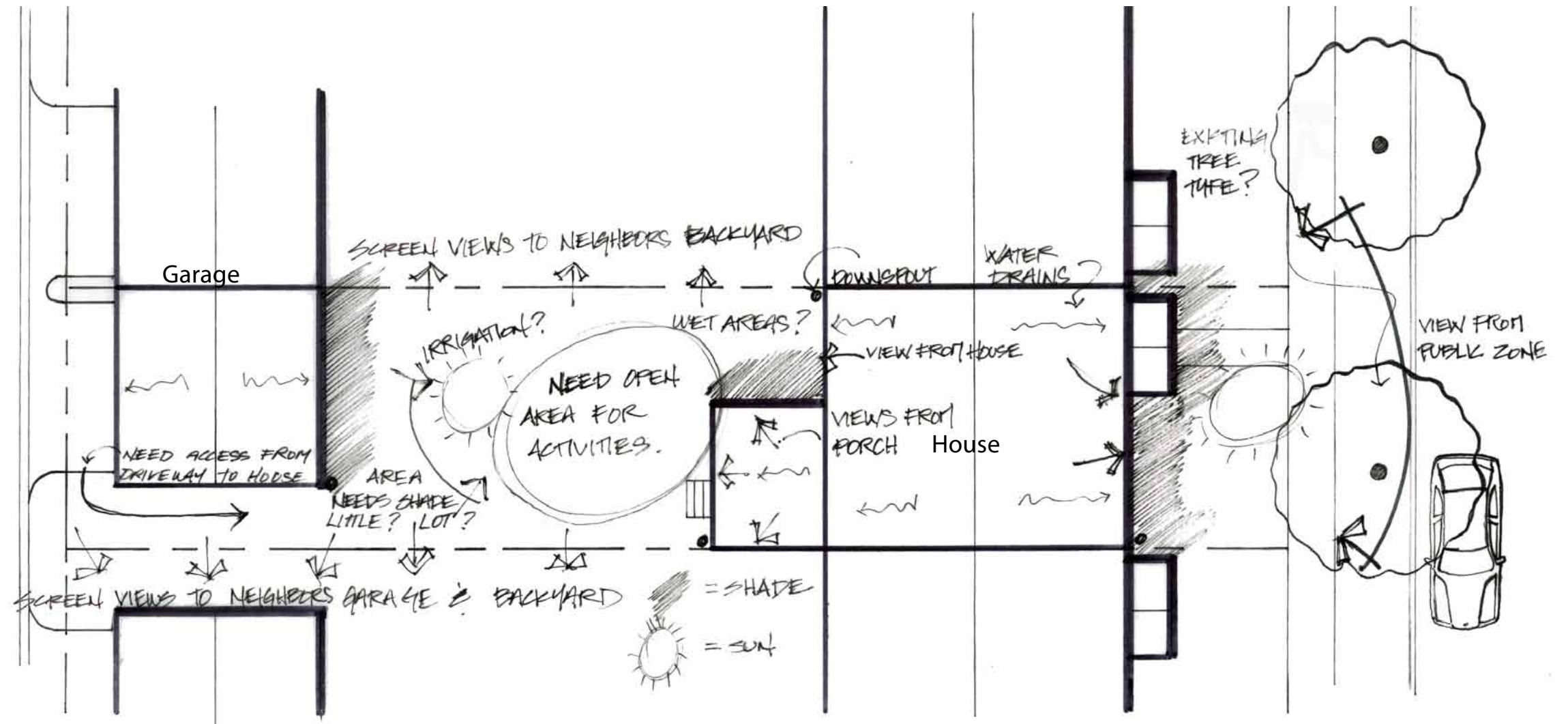
Inventory & Analysis

Begin with the inventory process of your yard. Gather and record data about the physical characteristics of the yard. Note the conditions that make it unique. Locate permanent features and lot characteristics such as the following:

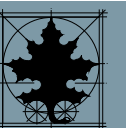
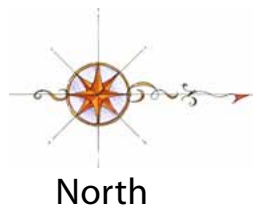
- the lot & building dimensions
- utilities
- hardscapes
- water sources
- any plants that you want to stay, relocate, or discard
- the climate
- drainage areas
- good and bad views
- sun and shady areas

You can loosely sketch this information on a plat or plan of your house and lot. This will help you determine the microclimates of your yard, and the goals for planting the yard.

When developing your own landscape, keep in mind what the desired aesthetic is, what the structural characteristics of the plants that you choose are, and think about how you will maintain your yard.



Sample Analysis Plan

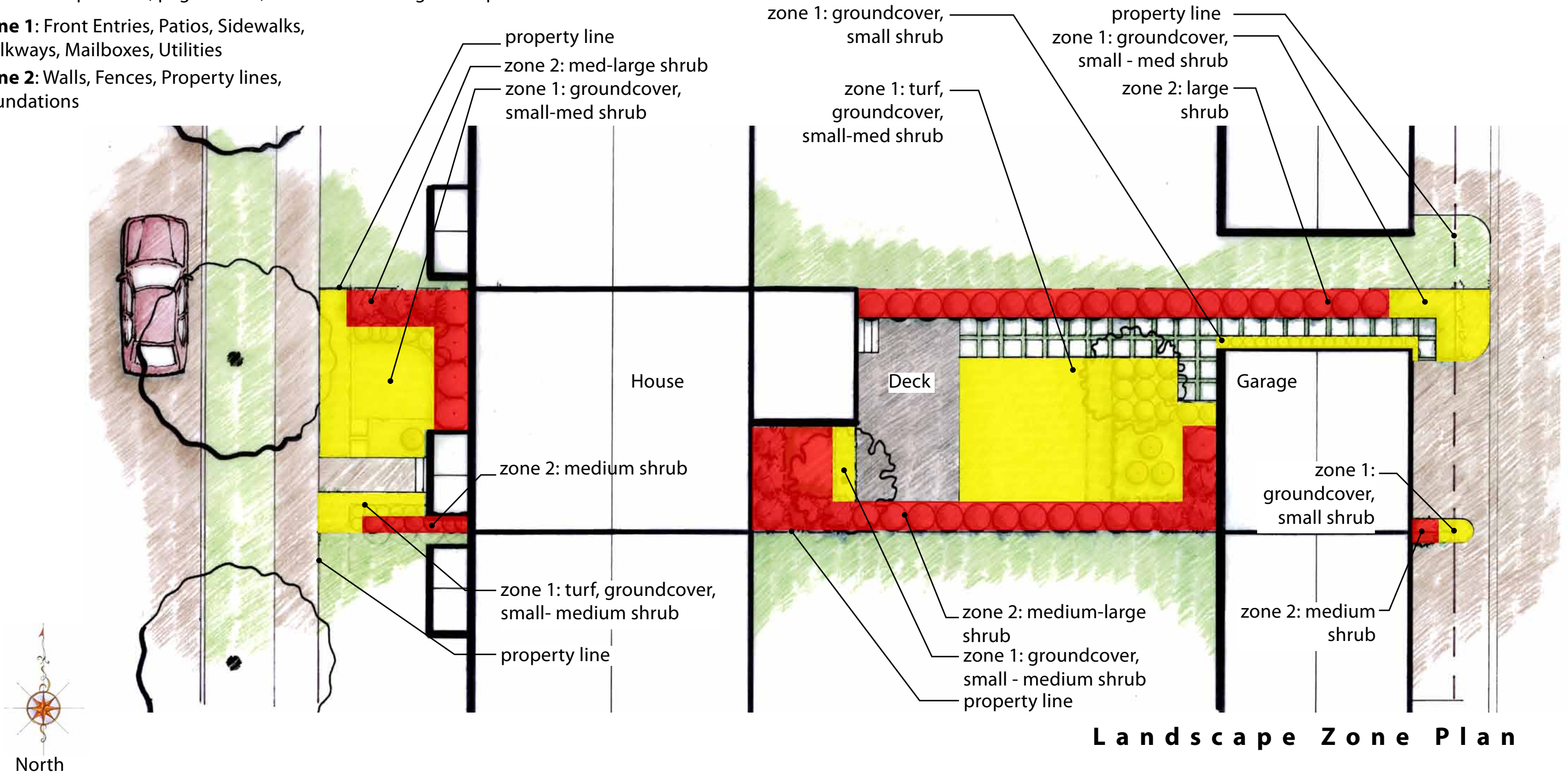


"Florida Friendly"® Zone Template: Townhome

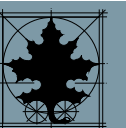
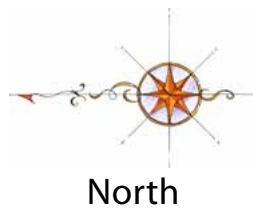
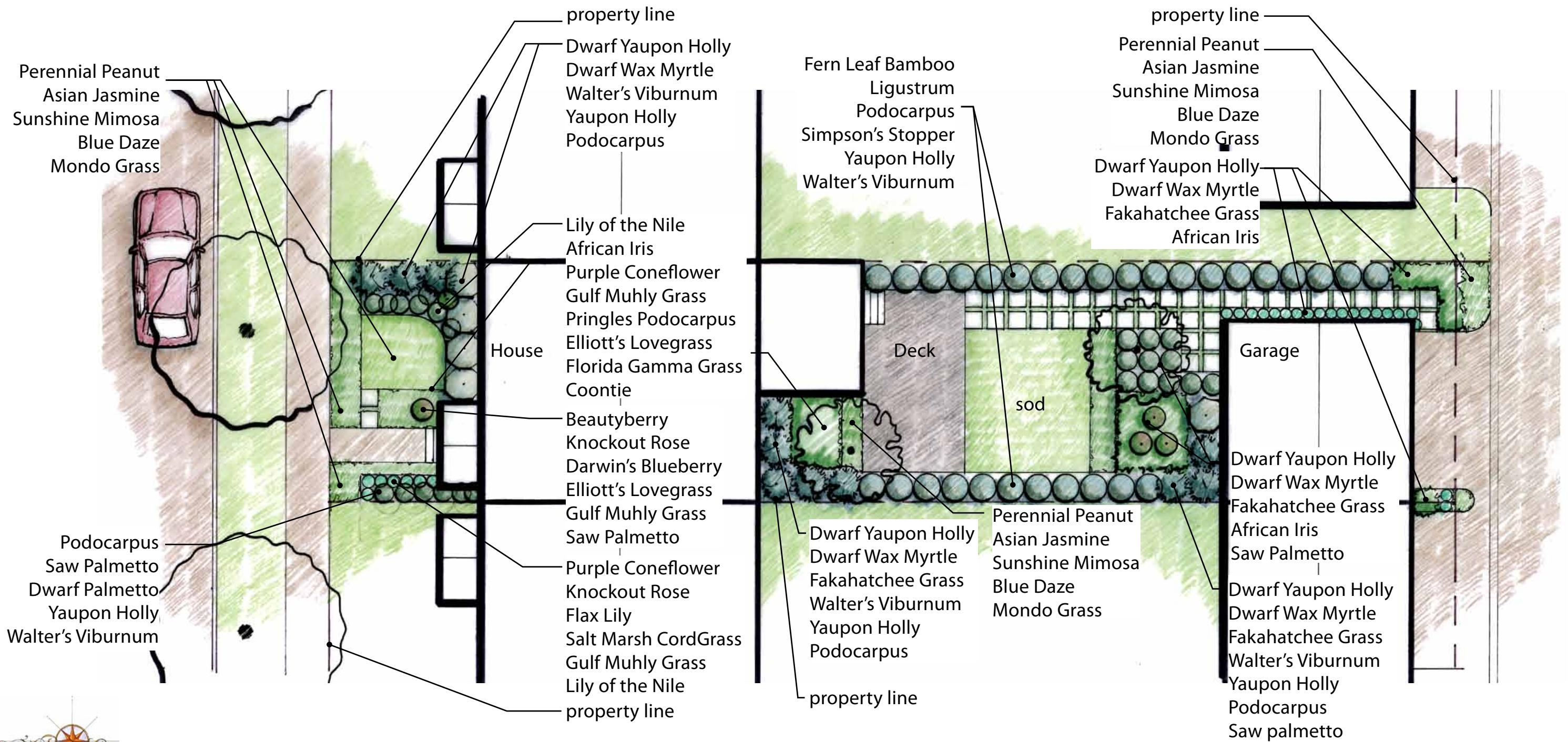
The zones indicate the type of plant material suitable to meet Celebration pattern book landscape standards. There are two zones; you may encounter a third zone if your lot has wet areas. Please note the public zone, i.e. the front yard, is required to meet Celebration standards; the private zone or back yard is drawn to be used as an example. Refer to the plant list, pages 12-15, when determining which plant to use for each zone.

Zone 1: Front Entries, Patios, Sidewalks, Walkways, Mailboxes, Utilities

Zone 2: Walls, Fences, Property lines, Foundations



"Florida Friendly"® Landscape Plan Example : Townhome

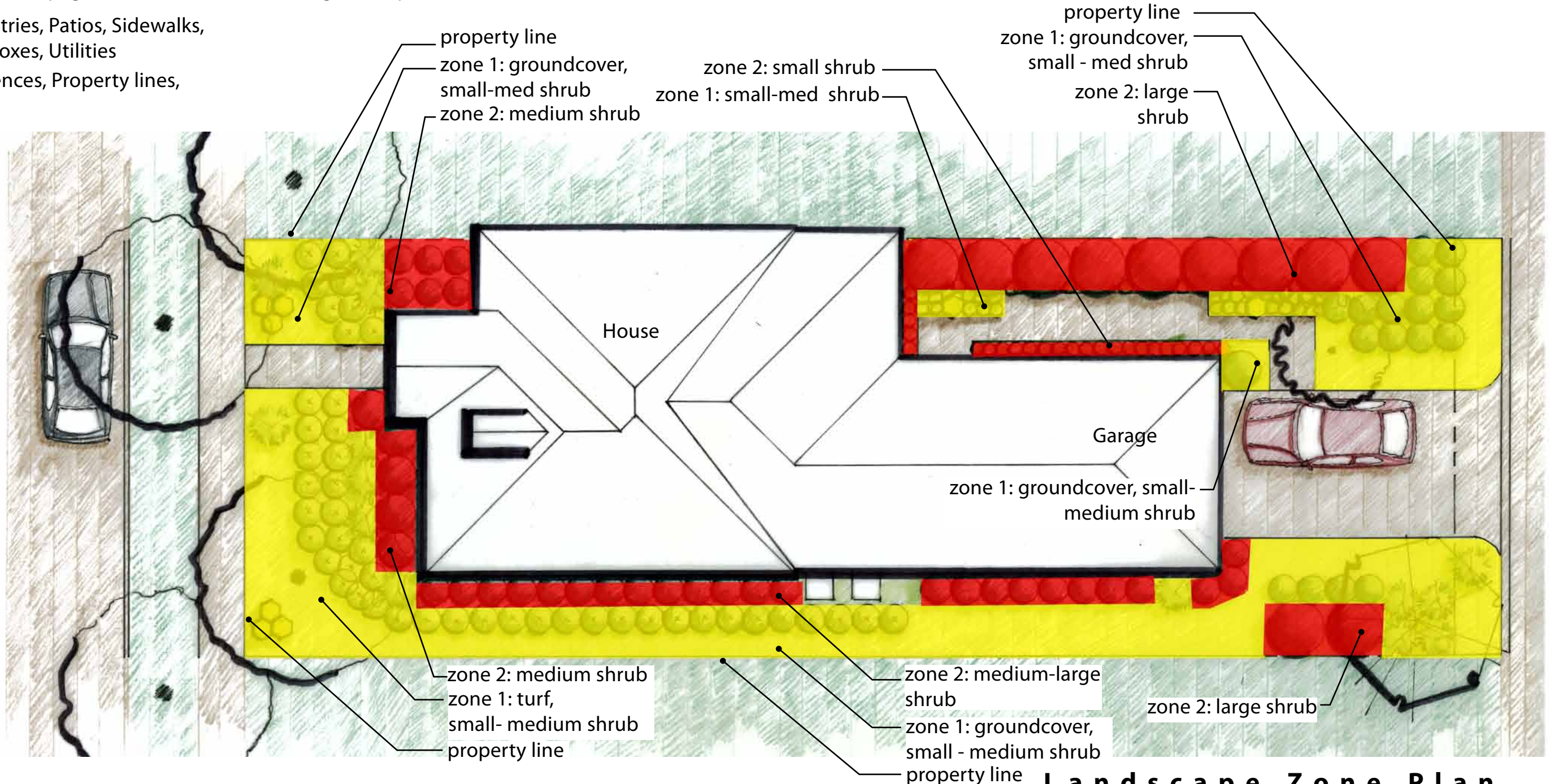


"Florida Friendly"® Zone Template: Cottage

The zones indicate the type of plant material suitable to meet Celebration pattern book landscape standards. There are two zones; you may encounter a third zone if your lot has wet areas. Please note the public zone, i.e. the front yard, is required to meet Celebration standards; the private zone or back yard is drawn to be used as an example. Refer to the plant list, pages 12-15, when determining which plant to use for each zone.

Zone 1: Front Entries, Patios, Sidewalks, Walkways, Mailboxes, Utilities

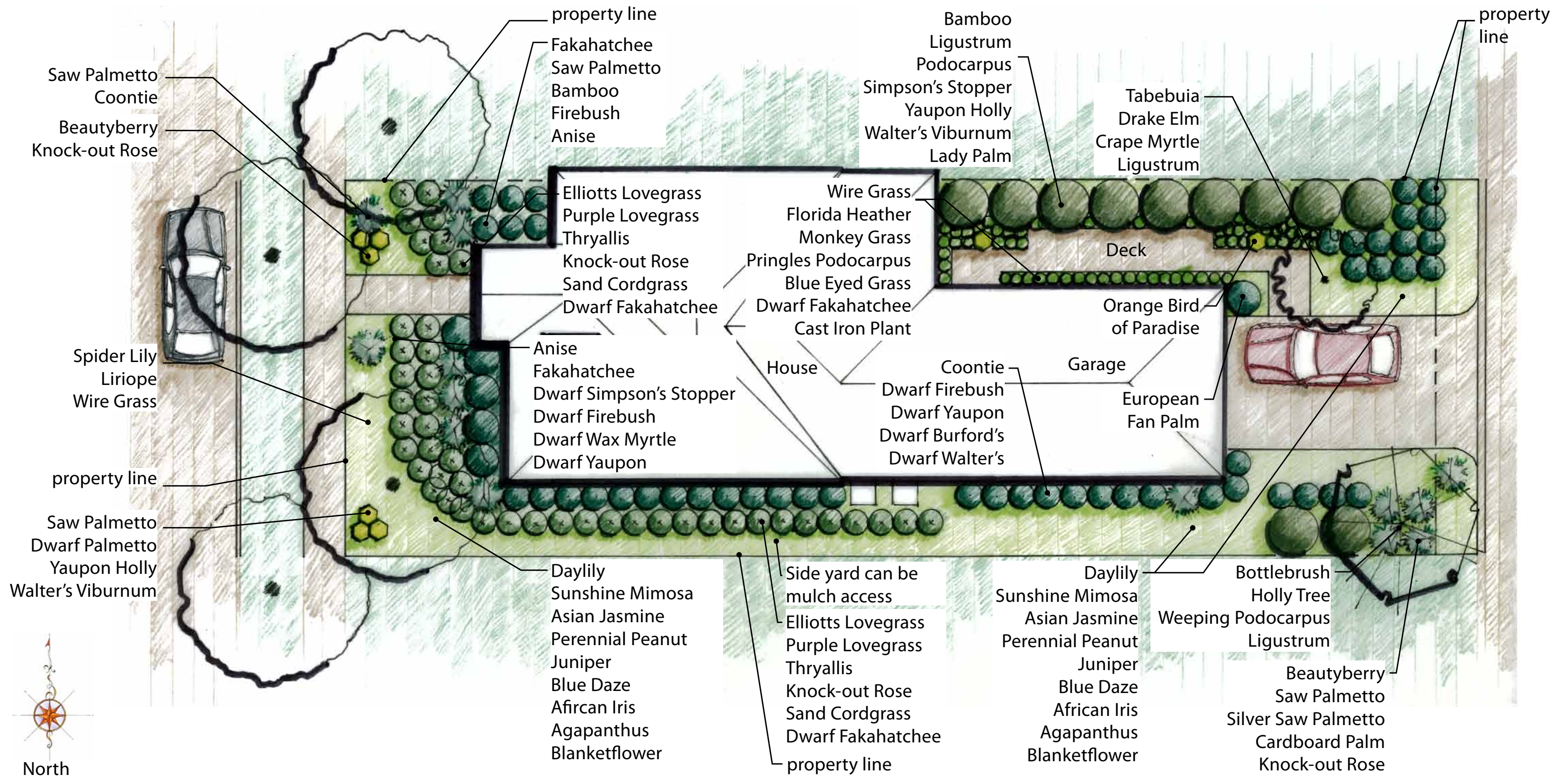
Zone 2: Walls, Fences, Property lines, Foundations



Landscape Zone Plan



"Florida Friendly"® Landscape Plan Example : Cottage

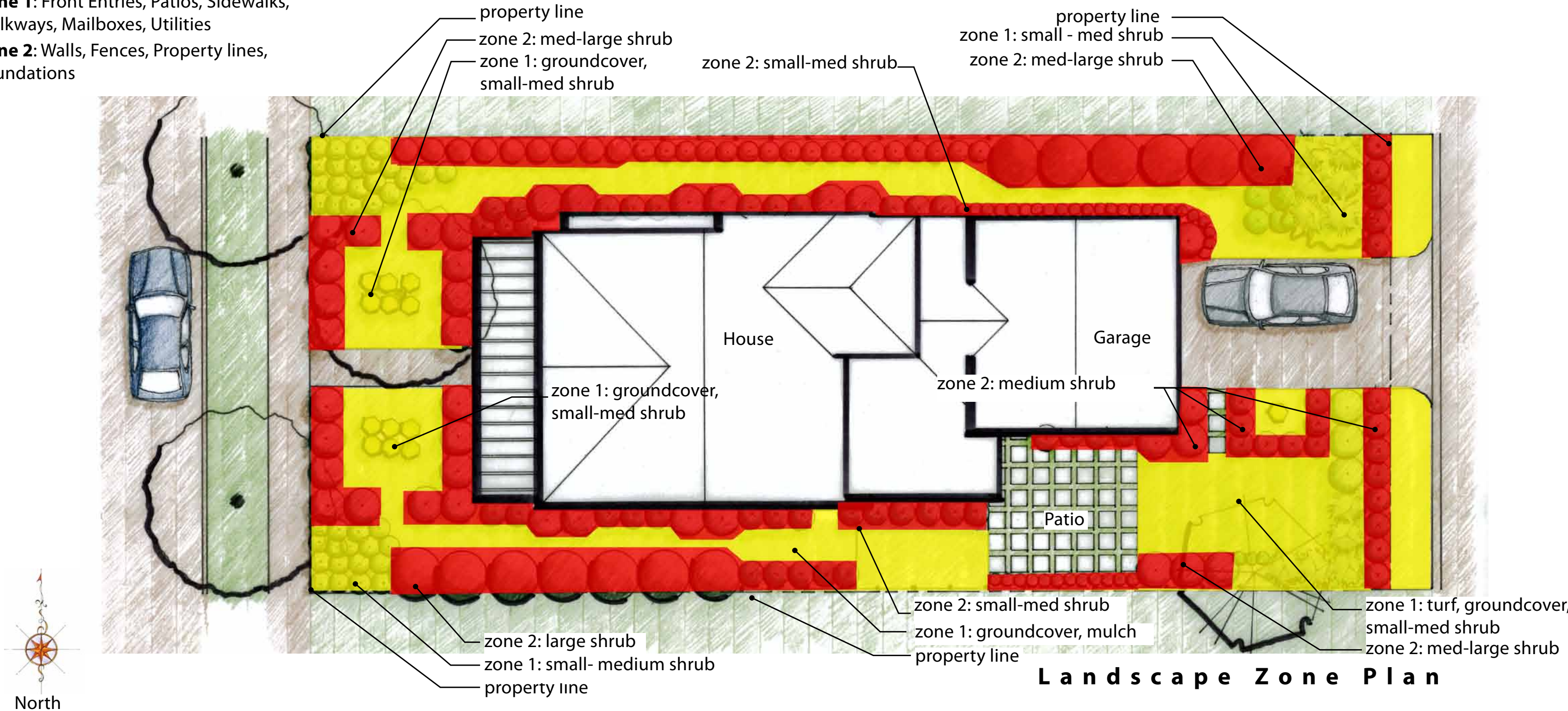


"Florida Friendly"® Zone Template: Bungalow

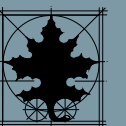
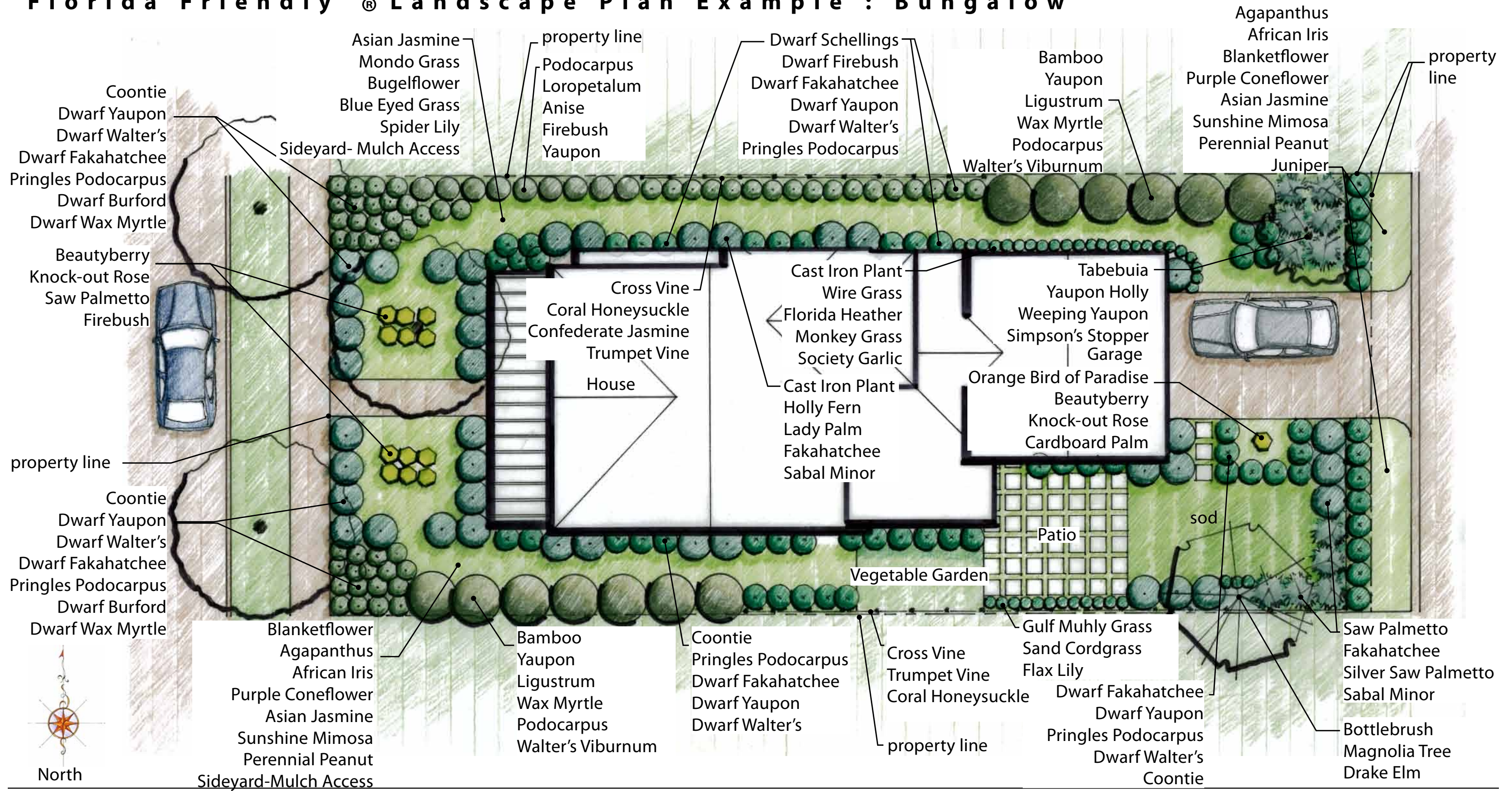
The zones indicate the type of plant material suitable to meet Celebration pattern book landscape standards. There are two zones; you may encounter a third zone if your lot has wet areas. Please note the public zone, i.e. the front yard, is required to meet Celebration standards; the private zone or back yard is drawn to be used as an example. Refer to the plant list, pages 12-15, when determining which plant to use for each zone.

Zone 1: Front Entries, Patios, Sidewalks, Walkways, Mailboxes, Utilities

Zone 2: Walls, Fences, Property lines, Foundations



"Florida Friendly"® Landscape Plan Example : Bungalow

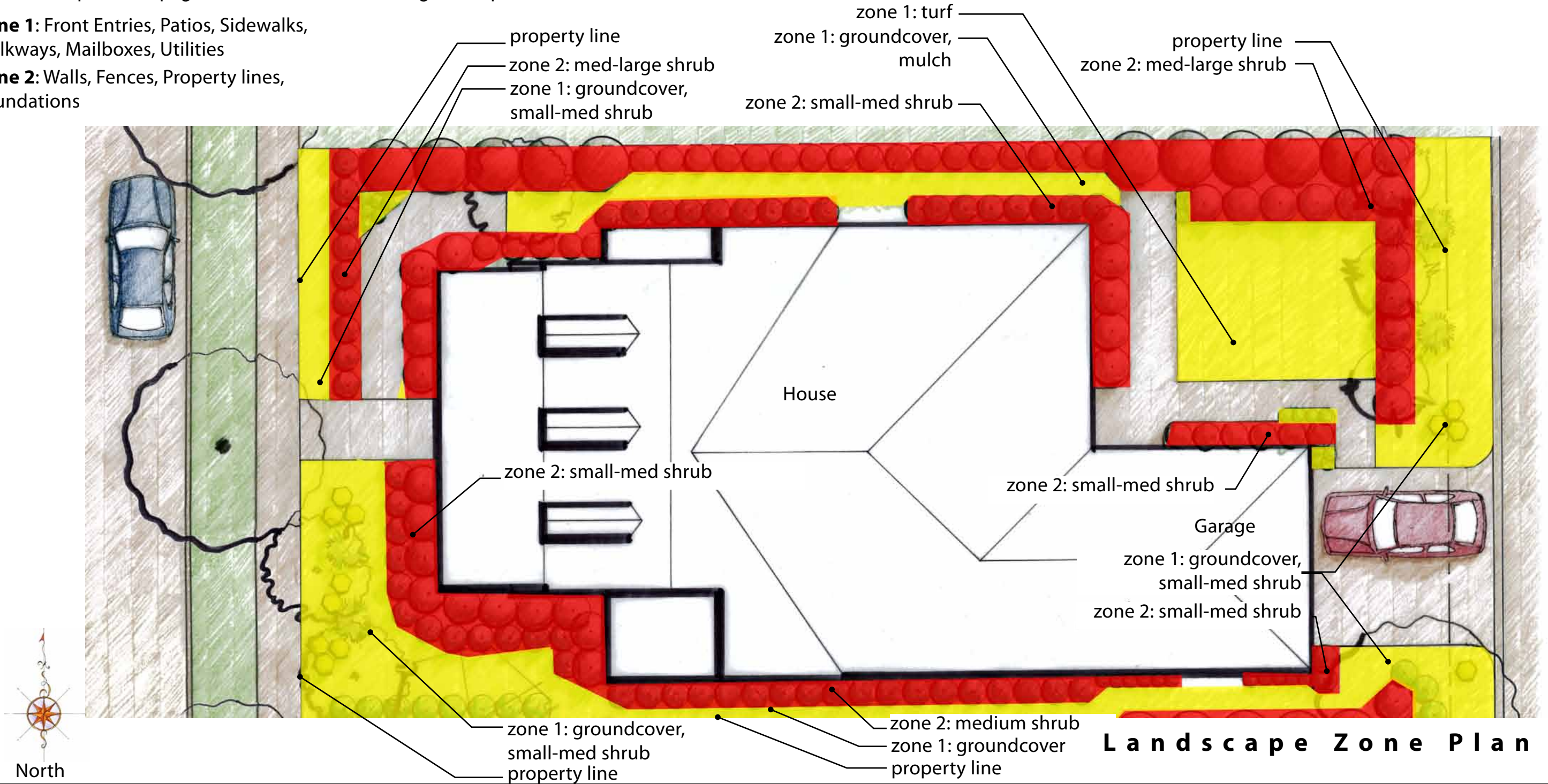


"Florida Friendly"® Zone Template: Village

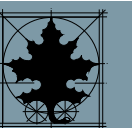
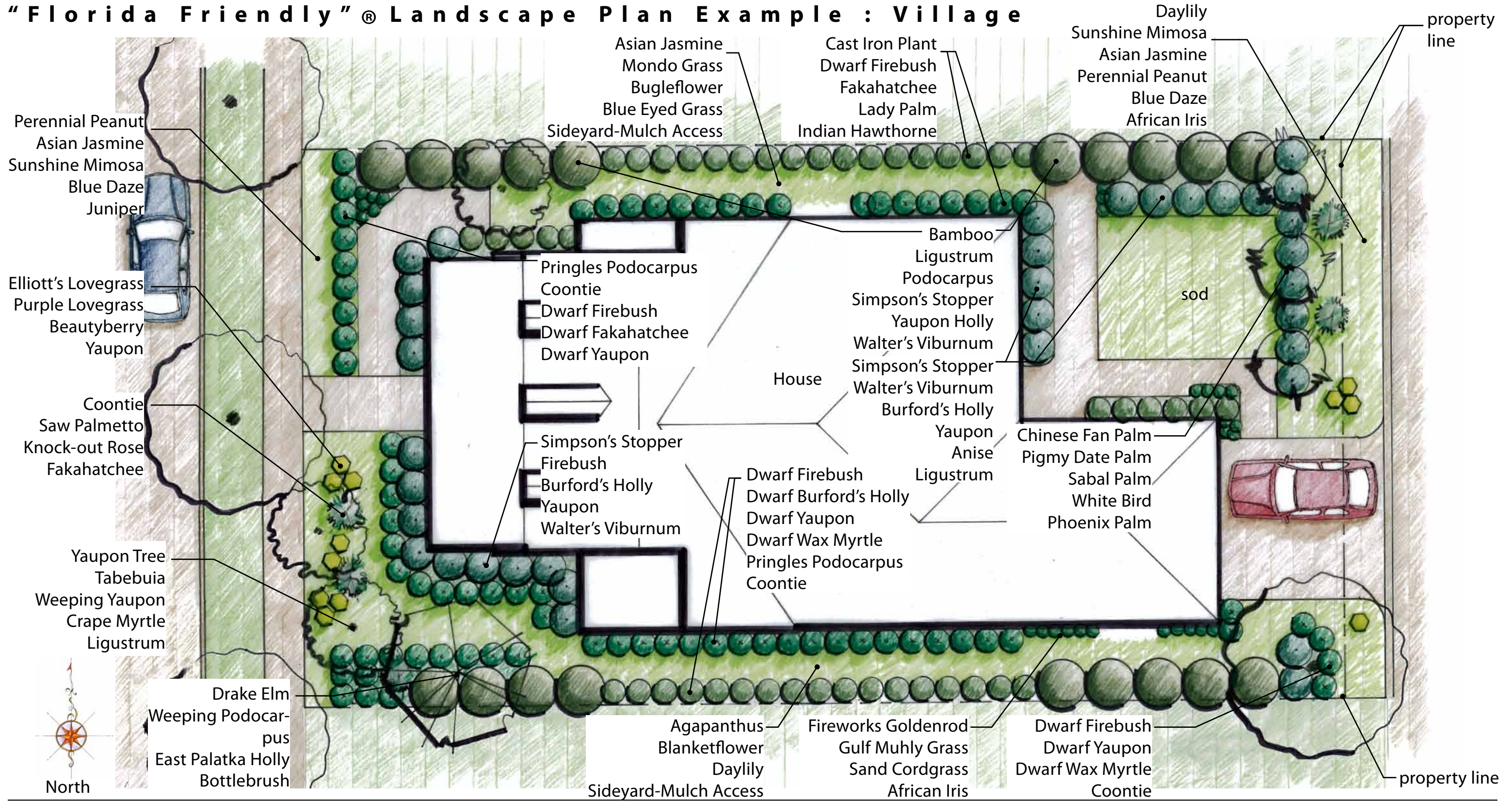
The zones indicate the type of plant material suitable to meet Celebration pattern book landscape standards. There are two zones; you may encounter a third zone if your lot has wet areas. Please note the public zone, i.e. the front yard, is required to meet Celebration standards; the private zone or back yard is drawn to be used as an example. Refer to the plant list, pages 12-15, when determining which plant to use for each zone.

Zone 1: Front Entries, Patios, Sidewalks, Walkways, Mailboxes, Utilities

Zone 2: Walls, Fences, Property lines, Foundations



"Florida Friendly"® Landscape Plan Example : Village

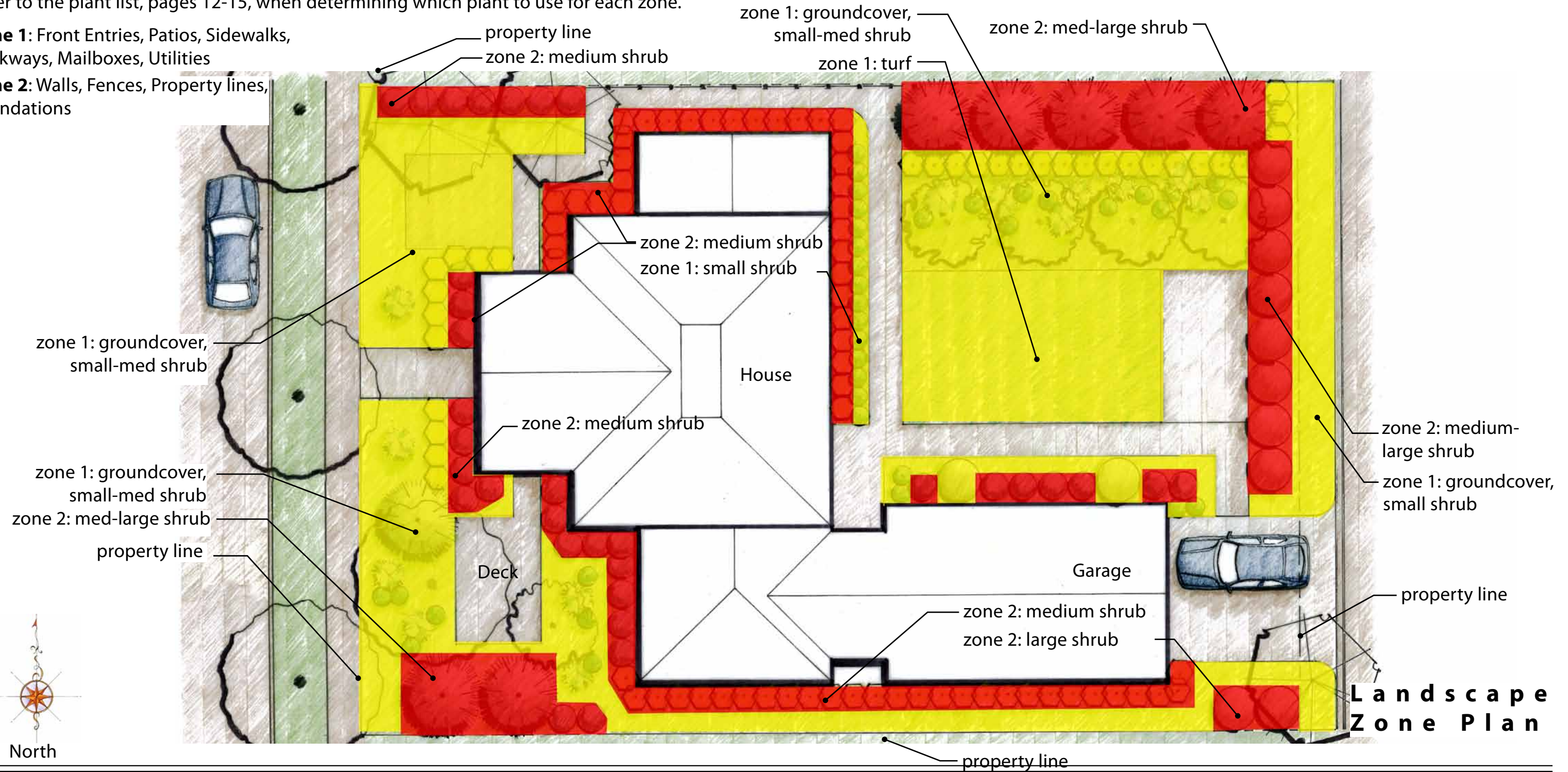


"Florida Friendly"® Zone Template: Estate

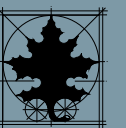
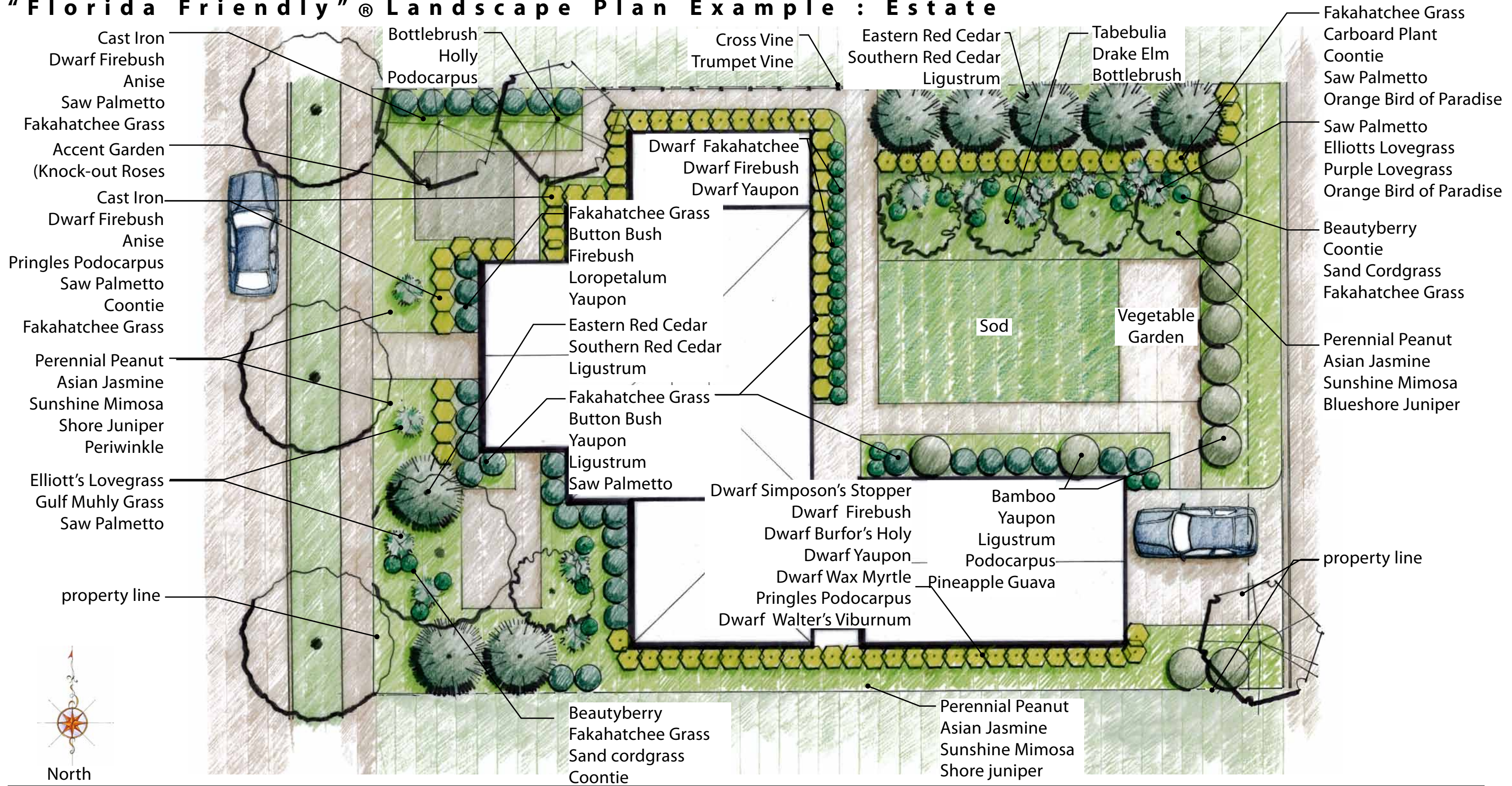
The zones indicate the type of plant material suitable to meet Celebration pattern book landscape standards. There are two zones; you may encounter a third zone if your lot has wet areas. Please note the public zone, i.e. the front yard, is required to meet Celebration standards; the private zone or back yard is drawn to be used as an example. Refer to the plant list, pages 12-15, when determining which plant to use for each zone.

Zone 1: Front Entries, Patios, Sidewalks, Walkways, Mailboxes, Utilities

Zone 2: Walls, Fences, Property lines, Foundations

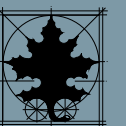


"Florida Friendly"® Landscape Plan Example : Estate



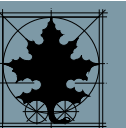
Celebration "Florida Friendly"® Plant List

Zone 1: Front Entries, Patios, Sidewalks, Walkways, Mailboxes, Utilities						
Plant Category	Botanical Name	Common Name	Specification	Botanical Name	Common Name	Specification
Small Trees						
	sun			shade		
	<i>Cassia bicapsularis</i>	Butterfly Bush, Lindley's Butterflybush	15 Gal., 5' Ht. x 6' Spd.	<i>Cassia bicapsularis</i>	Butterfly Bush, Lindley's Butterflybush	15 Gal., 5' Ht. x 6' Spd.
	<i>Chionanthus pygmaeus</i>	Pigmy Fringetree	15 Gal., 4.5' - 5' Ht.	<i>Chionanthus pygmaeus</i>	Pigmy Fringetree	15 Gal., 4.5' - 5' Ht.
	<i>Chionanthus virginicus</i>	Fringetree	15 Gal., 4.5' - 5' Ht.	<i>Chionanthus virginicus</i>	Fringetree	15 Gal., 4.5' - 5' Ht.
	<i>Citrus spp.</i>	Orange, Grapefruit, Lemon	15 Gal., 6'-8' Ht. x 2'-3' Spd.	<i>Ilex myrtifolia</i>	Myrtleleaf Holly, Myrtle Holly	15 Gal., 5'-6' Ht.
	<i>Ilex myrtifolia</i>	Myrtleleaf Holly, Myrtle Holly	15 Gal., 5'-6' Ht.	<i>Ilex vomitoria 'Pendula'</i>	Weeping Yaupon Holly	15 Gal., 6' Ht.
	<i>Ilex vomitoria 'Pendula'</i>	Weeping Yaupon Holly	15 Gal., 6' Ht.	<i>Ilex vomitoria</i>	Yaupon Holly Tree	15 Gal., 6' Ht. x 2' Spd.
	<i>Ilex vomitoria</i>	Yaupon Holly Tree	15 Gal., 6' Ht. x 2' Spd.	<i>Ligustrum japonicum</i>	Wax Privet	15 Gal., 4' Ht. x 4' Spd.
	<i>Lagerstroemia indica</i>	Crape Myrtle	15 Gal., 6' Ht. x 3' Spd.	<i>Illicium anisatum</i>	Japanese Anise Tree	15 Gal., 4' Ht. x 4' Spd.
	<i>Ligustrum japonicum</i>	Wax Privet	15 Gal., 4' Ht. x 4' Spd.	<i>Magnolia grandiflora 'Little Gem'</i>	Little Gem Magnolia	15 Gal., 6' Ht. x 3' Spd.
	<i>Magnolia grandiflora 'Little Gem'</i>	Little Gem Magnolia	15 Gal., 6' Ht. x 3' Spd.	<i>Myrica cerifera</i>	Wax Myrtle	15 Gal., 6' Ht. x 2' Spd.
	<i>Myrica cerifera</i>	Wax Myrtle	15 Gal., 6' Ht. x 2' Spd.	<i>Myricanthes fragrans</i>	Simpson's Stopper	15 Gal., 5'-6' Ht.
	<i>Myricanthes fragrans</i>	Simpson's Stopper	15 Gal., 5'-6' Ht.	<i>Prunus umbellata</i>	Flatwoods Plum	15 Gal., 7'-8' Ht.
	<i>Prunus umbellata</i>	Flatwoods Plum	15 Gal., 7'-8' Ht.	<i>Ternstroemia gymnanthera</i>	Cleyera, Ternstroemia	15 Gal., 5'-6' Ht.
	<i>Raphiolepis 'Majestic Beauty'</i>	Majestic Beauty Indian Hawthorne	15 Gal., 5'-6' Ht.	<i>Viburnum obovatum</i>	Walter's Viburnum	15 Gal., 4' Ht. x 4' Spd.
	<i>Viburnum obovatum</i>	Walter's Viburnum	15 Gal., 4' Ht. x 4' Spd.			
	<i>Vitex agnus castus</i>	Chaste Tree	15 Gal., 8' Ht. x 3' Spd.			
Medium Trees						
	sun			shade		
	<i>Callistemon spp.</i>	Bottlebrush	30 Gal., 6' Ht. x 4' Spd.	<i>Carya floridana</i>	Scrub Hickory	30 Gal., 6'-8' Ht.
	<i>Carya floridana</i>	Scrub Hickory	30 Gal., 6'-8' Ht.	<i>Eriobotrya japonica</i>	Loquat Tree	30 Gal., 6' Ht. x 3' Spd.
	<i>Gordonia lasianthus</i>	Loblolly Bay	30 Gal., 6' Ht. x 3' Spd.	<i>Gordonia lasianthus</i>	Loblolly Bay	30 Gal., 6' Ht. x 3' Spd.
	<i>Ilex cassine</i>	Dahoon Holly	30 Gal., 10' Ht.	<i>Ilex cassine</i>	Dahoon Holly	30 Gal., 10' Ht.
	<i>Ilex opaca</i>	Scrub Holly	30 Gal., 6' Ht. x 3' Spd.	<i>Ilex opaca</i>	Scrub Holly	30 Gal., 6' Ht. x 3' Spd.
	<i>Ilex x attenuata</i>	East Palatka Holly, Savannah Holly	30 Gal., 10' Ht. x 3' Spd.	<i>Ilex x attenuata</i>	East Palatka Holly, Savannah Holly	30 Gal., 10' Ht. x 3' Spd.
	<i>Ilex rotunda</i>	Round Holly, Roundleaf Holly, Rotund Holly	30 Gal., 5'-6' Ht.	<i>Ilex rotunda</i>	Round Holly, Roundleaf Holly, Rotund Holly	30 Gal., 5'-6' Ht.
	<i>Eriobotrya japonica</i>	Loquat Tree	30 Gal., 6' Ht. x 3' Spd.	<i>Juniperus silicicola</i>	Southern Red Cedar	30 Gal., 10'-14' Ht.
	<i>Juniperus silicicola</i>	Southern Red Cedar	30 Gal., 10'-14' Ht.	<i>Juniperus virginiana</i>	Eastern Red Cedar	30 Gal., 6' Ht. x 3' Spd.
	<i>Juniperus virginiana</i>	Eastern Red Cedar	30 Gal., 6' Ht. x 3' Spd.	<i>Magnolia virginiana</i>	Sweet Bay Magnolia	30 Gal., 6' Ht. x 2' Spd.
	<i>Magnolia virginiana</i>	Sweet Bay Magnolia	30 Gal., 6' Ht. x 2' Spd.	<i>Ulmus parviflora 'Drake'</i>	Drake Elm	30 Gal., 12' Ht. x 5' Spd.
	<i>Podocarpus gracilior</i>	Weeping Podocarpus	30 Gal., 8'-10' Ht.			
	<i>Podocarpus macrophyllus</i>	Podocarpus	30 Gal., 6' Ht. x 2' Spd.			
	<i>Tabebuia argentea</i>	Yellow Trumpet Tree	30 Gal., 6' Ht. x 3' Spd.			
	<i>Ulmus parviflora 'Drake'</i>	Drake Elm	30 Gal., 12' Ht. x 5' Spd.			
Large Trees						
	sun			shade		
	<i>Acer rubrum</i>	Red Maple	65 Gal., 10' Ht. x 4' Spd.	<i>Carya floridana</i>	Scrub Hickory	65 Gal., 8'-10' Ht.
	<i>Carya floridana</i>	Scrub Hickory	65 Gal., 8'-10' Ht.	<i>Magnolia grandiflora</i>	Southern Magnolia	65 Gal., 10' Ht. x 4' Spd.
	<i>Gordonia lasianthus</i>	Loblolly Bay	65 Gal., 6' Ht. x 3' Spd.			
	<i>Liquidambar styraciflua</i>	Sweet Gum	65 Gal., 8' Ht. x 4' Spd.			
	<i>Magnolia grandiflora</i>	Southern Magnolia	65 Gal., 10' Ht. x 4' Spd.			
	<i>Parkinsonia aculeata</i>	Jerusalem Thorn	65 Gal., 6' Ht. x 3' Spd.			
	<i>Persea borbonia</i>	Red Bay, Bay Oak	65 Gal., 10'-14' Ht.			
	<i>Persea palustris</i>	Swamp Bay	65 Gal., 8' Ht. x 4' Spd.			
	<i>Pinus elloittii</i>	Slash Pine	65 Gal., 8' Ht. x 4' Spd.			
	<i>Pinus palustris</i>	Longleaf Pine	65 Gal., 8' Ht. x 4' Spd.			
	<i>Platanus occidentalis</i>	Sycamore	65 Gal., 12' Ht. x 6' Spd.			
	<i>Quercus chapmanii</i>	Chapman Oak	65 Gal., 14' Ht. x 8' Spd.			
	<i>Quercus laurifolia</i>	Laurel Oak	65 Gal., 14' Ht. x 6' Spd.			
	<i>Quercus geminata</i>	Sand Live Oak	65 Gal., 14' Ht. x 8' Spd.			
	<i>Quercus shumardii</i>	Shumard Oak	65 Gal., 8' Ht. x 4' Spd.			
	<i>Quercus virginiana</i>	Live Oak	65 Gal., 14' Ht. x 6' Spd.			
	<i>Taxodium distichum</i>	Bald Cypress	65 Gal., 12' Ht. x 6' Spd.			
	<i>Ulmus americana</i>	American Elm	65 Gal., 12' Ht. x 6' Spd.			
	<i>Ulmus alata</i>	Winged Elm	65 Gal., 12' Ht. x 6' Spd.			



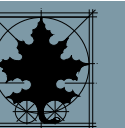
Celebration "Florida Friendly"® Plant List

Zone 1: Front Entries, Patios, Sidewalks, Walkways, Mailboxes, Utilities						
Plant Category	Botanical Name	Common Name	Specification	Botanical Name	Common Name	Specification
Large Palms	sun			shade		
	<i>Butia capitata</i> , private area only	Pindo Palm, Jelly Palm	6'-8' Clear Trunk	<i>Butia capitata</i> , private area only	Pindo Palm, Jelly Palm	6'-8' Clear Trunk
	<i>Chamaerops humilis</i> , private area only	European Fan Palm	2'-6' Clear Trunk	<i>Chamaerops humilis</i> , private area only	European Fan Palm	2'-6' Clear Trunk
	<i>Livistona chinensis</i> , private area only	Chinese Fan Palm	6'-10' Clear Trunk	<i>Livistona chinensis</i> , private area only	Chinese Fan Palm	6'-10' Clear Trunk
	<i>Phoenix robelenii</i> , private area only	Pigmy Date Palm	4'-5' Clear Trunk	<i>Phoenix robelenii</i> , private area only	Pigmy Date Palm	4'-5' Clear Trunk
	<i>Phoenix spp. (exclude reclinata)</i> , private area only	Date Palms	8'-10' Clear Trunk	<i>Phoenix spp. (exclude reclinata)</i> , private area only	Date Palms	8'-10' Clear Trunk
	<i>Sabal Palmetto</i> , private area only	Sabal Palm, Cabbage Palm	8'-10' Clear Trunk	<i>Sabal Palmetto</i> , private area only	Sabal Palm, Cabbage Palm	8'-10' Clear Trunk
	<i>Strelitzia nicolai</i> , private area only	Giant Bird of Paradise, White Bird of Paradise	7' Ht.	<i>Strelitzia nicolai</i> , private area only	Giant Bird of Paradise, White Bird of Paradise	7' Ht.
	<i>Trachycarpus fortunei</i> , private area only	Windmill Palm	4' Ht.	<i>Trachycarpus fortunei</i> , private area only	Windmill Palm	4' Ht.
	Small Shrubs	sun			shade	
<i>Agapanthus africanus</i>		Lily of the Nile	1 Gal., Space 24" apart.	<i>Aristida stricta</i>	Wiregrass	1 Gal., Space 36" apart.
<i>Aristida stricta</i>		Wiregrass	1 Gal., Space 36" apart.	<i>Cuphea hyssopifolia</i>	Florida Heather	1 Gal., 8" Ht. x 8" Spd., Space 30" apart.
<i>Cuphea hyssopifolia</i>		Florida Heather	1 Gal., 8" Ht. x 8" Spd., Space 30" apart.	<i>Hymenocallis</i>	Spider Lily	1 Gal., 8"-12" Ht., Space 12" apart.
<i>Dianella tasmanica</i>		Flax Lily	1 Gal., 12" Ht. x 12" Spd., Space 24" apart.	<i>Ilex vomitoria 'Nana'</i>	Dwarf Yaupon Holly	1 Gal., 8" Ht. x 8" Spd., Space 30" apart.
<i>Dietes vegeta</i>		African Iris	1 Gal., Space 24" apart.	<i>Ilex vomitoria 'Schellings Dwarf'</i>	Dwarf Schellings Holly	1 Gal., 8" Ht. x 8" Spd., Space 30" apart.
<i>Echinacea purpurea 'Magnus'</i>		Purple Coneflower	1 Gal., Space 24" apart.	<i>Liriope muscari</i>	Monkey Grass, Liriope	1 Gal., 6" Ht. x 8" Spd., Space 24" apart.
<i>Gaillardia pulchella</i>		Blanket Flower	1 Gal., Space 18" apart.	<i>Podocarpus 'Pringles'</i>	Pringles Podocarpus	1 Gal., 8" Ht. x 8" Spd., Space 24" apart.
<i>Gamolepsis spp.</i> , private area only		Bush Daisy	1 Gal., 15" Ht. x 12" Spd., Space 36" apart.	<i>Raphiolepis indica 'Dwarf'</i>	Dwarf Indian Hawthorn	1 Gal., 8" Ht. x 8" Spd., Space 30" apart.
<i>Hamelia patens 'Compacta'</i>		Dwarf Firebush	1 Gal., 12" Ht. x 12" Spd., Space 24" apart.	<i>Sisyrinchium angustifolium</i>	Blue Eyed Grass	1 Gal., 14" Ht., Space 12" apart.
<i>Helianthus debilis</i>		Dune Sunflower	1 Gal., Space 18" apart.	<i>Tripsacum floridana</i>	Florida Gamagrass, Dwarf Fakahatchee Grass	1 Gal., 12" Ht., Space 24" apart.
<i>Hemerocallis spp.</i>		Daylily	1 Gal., 8"-12" Ht., Space 12" apart.	<i>Tulbaghia violacea</i>	Society Garlic	1 Gal., 14" Ht., Space 12" apart.
<i>Hymenocallis</i>		Spider Lily	1 Gal., 8"-12" Ht., Space 12" apart.			
<i>Ilex vomitoria 'Nana'</i>		Dwarf Yaupon Holly	1 Gal., 8" Ht. x 8" Spd., Space 30" apart.			
<i>Ilex vomitoria 'Schellings Dwarf'</i>		Dwarf Schellings Holly	1 Gal., 8" Ht. x 8" Spd., Space 30" apart.			
<i>Leucophyllum frutescens</i>		Purple Sage, Texas Ranger, Silverleaf	1 Gal., 8" Ht. x 8" Spd., Space 30" apart.			
<i>Liriope muscari</i>		Monkey Grass, Liriope	1 Gal., 6" Ht. x 8" Spd., Space 24" apart.			
<i>Muhlenbergia capillaris</i>		Gulf Muhly Grass	1 Gal., 18" Ht. x 12" Spd., Space 24" apart.			
<i>Podocarpus 'Pringles'</i>		Pringles Podocarpus	1 Gal., 8" Ht. x 8" Spd., Space 24" apart.			
<i>Raphiolepis indica 'Dwarf'</i>		Dwarf Indian Hawthorn	1 Gal., 8" Ht. x 8" Spd., Space 30" apart.			
<i>Rosa spp. 'Knock Out'</i>		Knock Out Rose	1 Gal., 12" Ht. x 8" Spd., Space 30" apart.			
<i>Sisyrinchium angustifolium</i>		Blue Eyed Grass	1 Gal., 14" Ht., Space 12" apart.			
<i>Solidago rugosa 'Fireworks'</i> , use sparingly		Fireworks Goldenrod	1 Gal., 14" Ht., Space 12" apart.			
<i>Spartina patens</i>		Salt Marsh Cordgrass	1 Gal., Space 48" apart.			
<i>Tripsacum floridana</i>		Florida Gamagrass, Dwarf Fakahatchee Grass	1 Gal., 12" Ht., Space 24" apart.			
<i>Tulbaghia violacea</i>		Society Garlic	1 Gal., 14" Ht., Space 12" apart.			
<i>Vaccinium darrowii</i>		Darwin's Blueberry	1 Gal., 8" Ht. x 8" Spd., Space 30" apart.			
<i>Viburnum obovatum 'Densa'</i>	Dwarf Walter's Viburnum	1 Gal., 8" Ht. x 8" Spd., Space 30" apart.				
Medium Shrubs	sun			shade		
	<i>Callicarpa americana</i>	Beautyberry	3 Gal., 24" Ht. x 18" Spd., Space 48" apart.	<i>Aspidistra elatior</i>	Cast-Iron Plant	3-5 Plants per Pot, Space 24" apart.
	<i>Duranta erecta</i>	Skyflower, Golden Dewdrop, Pigeonberry	3 Gal., 15" Ht. x 18" Spd., Space 30" apart.	<i>Callicarpa americana</i>	Beautyberry	3 Gal., 24" Ht. x 18" Spd., Space 48" apart.
	<i>Eragrostis elliottii</i>	Elliott's Lovegrass	3 Gal., 24"-30" Ht., Space 48" apart.	<i>Crytomium falcatum</i>	Holly Fern	3 Gal., 14" Ht. x 12" Spd., Space 36" apart.
	<i>Eragrostis spectabilis</i>	Purple Lovegrass	3 Gal., 24"-30" Ht., Space 48" apart.	<i>Duranta erecta</i>	Skyflower, Golden Dewdrop, Pigeonberry	3 Gal., 15" Ht. x 18" Spd., Space 30" apart.
	<i>Galphimia glauca</i>	Thryallis, Rain of Gold	3 Gal., 15" Ht. x 18" Spd., Space 30" apart.	<i>Fatsia japonica</i> , private area only	Japanese Fatsia, Japanese Aralia, Paperplant	3 Gal., 15" Ht. x 18" Spd., Space 30" apart.
	<i>Ilex cornuta 'Burfordii Nana'</i>	Dwarf Burford's Holly	3 Gal., 20" Ht. x 18" Spd., Space 30" apart.	<i>Galphimia glauca</i>	Thryallis, Rain of Gold	3 Gal., 15" Ht. x 18" Spd., Space 30" apart.
	<i>Myrcianthes fragrans 'Compacta'</i>	Dwarf Simpson's Stopper	3 Gal., 20"-24" Ht., Space 36" apart.	<i>Myrcianthes fragrans 'Compacta'</i>	Dwarf Simpson's Stopper	3 Gal., 20"-24" Ht., Space 36" apart.
	<i>Myrica cerifera 'Pumila'</i>	Dwarf Wax Myrtle	3 Gal., 20"-24" Ht., Space 30" apart.	<i>Pittosporum tobira</i>	Pittosporum	3 Gal., 20" Ht. x 18" Spd., Space 30" apart.
	<i>Pittosporum tobira</i>	Pittosporum	3 Gal., 20" Ht. x 18" Spd., Space 30" apart.	<i>Pittosporum tobira 'Variegated'</i>	Variegated Pittosporum	3 Gal., 20" Ht. x 18" Spd., Space 30" apart.
	<i>Pittosporum tobira 'Variegated'</i>	Variegated Pittosporum	3 Gal., 20" Ht. x 18" Spd., Space 30" apart.	<i>Raphiolepis indica</i>	Indian Hawthorn	3 Gal., 15" Ht. x 18" Spd., Space 30" apart.
	<i>Raphiolepis indica</i>	Indian Hawthorn	3 Gal., 15" Ht. x 18" Spd., Space 30" apart.	<i>Raphis excelsa</i> , private area only	Lady Palm	3 Gal., 12" Ht. x 12" Spd., Space 36" apart.
	<i>Rosa spp. 'Knock Out'</i>	Knock Out Rose	3 Gal., 18" Ht. x 20" Spd., Space 36" apart.	<i>Serenoa repens</i>	Saw Palmetto	3 Gal., 24"-30" Ht., Space 48" apart.
	<i>Spartina bakeri</i>	Sand Cordgrass	3 Gal., 24"-30" Ht., Space 48" apart.	<i>Strelitzia reginae</i> , private area only	Orange Bird of Paradise	3 Gal., 14" Ht. x 12" Spd., Space 36" apart.
	<i>Tripsacum dactyloides</i>	Fakahatchee Grass, Eastern Gamagrass	3 Gal., 24"-30" Ht., Space 48" apart.	<i>Tripsacum dactyloides</i>	Fakahatchee Grass, Eastern Gamagrass	3 Gal., 24"-30" Ht., Space 48" apart.
	<i>Zamia floridana</i>	Coontie	3 Gal., 12"-14" Ht. x 12" Spd., Space 36" apart.	<i>Zamia floridana</i>	Coontie	3 Gal., 12" Ht. x 12" Spd., Space 36" apart.
	<i>Zamia furfuracea</i> , private area only	Cardboard Plant	3 Gal., 14" Ht. x 14" Spd., Space 48" apart.	<i>Zamia furfuracea</i> , private area only	Cardboard Plant	3 Gal., 14" Ht. x 14" Spd., Space 48" apart.



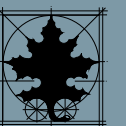
Celebration "Florida Friendly"® Plant List

Zone 1: Front Entries, Patios, Sidewalks, Walkways, Mailboxes, Utilities						
Plant Category	Botanical Name	Common Name	Specification	Botanical Name	Common Name	Specification
Turf Grass	sun			shade		
	<i>Cynodon dactylon</i>	Bermuda Grass		<i>Stenotaphrum secundatum 'Floratam'</i>	St. Augustine Grass	
	<i>Stenotaphrum secundatum 'Floratam'</i>	St. Augustine Grass				
	<i>Zoysiagrass</i>	Zoysia				
Groundcover	sun			shade		
	<i>Arachis glabrata</i>	Perennial Peanut	1 Gal., Space 24" apart.	<i>Ajuga reptans</i>	Bugleflower, Bugleweed, Carpet Bugleweed	1 Gal., Space 15" apart.
	<i>Evolvulus glomeratus ssp. Grandiflorus</i>	Blue Daze	1 Gal., Space 18" apart.	<i>Ophiopogon japonicus</i>	Mondo Grass	1 Gal., Space 10" apart.
	<i>Juniperus conferta 'Compacta'</i>	Compact Juniper	1 Gal., Space 18" apart.	<i>Trachelospermum asiaticum</i>	Asian Jasmine	1 Gal., Space 15" apart.
	<i>Juniperus conferta</i>	Shore Juniper	1 Gal., Space 18" apart.	<i>Vinca major 'Variegata'</i>	Variegated Big Periwinkle	1 Gal., Space 24" apart.
	<i>Juniperus horizontalis</i>	Creeping Juniper, Horizontal Juniper	1 Gal., Space 24" apart.			
	<i>Mimosa strigillosa</i>	Sunshine Mimosa	1 Gal., Space 18" apart.			
	<i>Trachelospermum asiaticum</i>	Asian Jasmine	1 Gal., Space 24" apart.			
	<i>Vinca major 'Variegata'</i>	Variegated Big Periwinkle	1 Gal., Space 24" apart.			
	Vines	sun			shade	
<i>Bignonia capreolata</i>		Cross Vine, Trumpet Flower	1 Gal., 12"-18" Vines	<i>Bignonia capreolata</i>	Cross Vine, Trumpet Flower	1 Gal., 18"-24" Vines
<i>Bougainvillea spp.</i>		Bougainvillea	1 Gal., 1'-2' Ht.	<i>Campsis radicans</i>	Trumpet Creeper	1 Gal., 12"-18" Vines
<i>Campsis radicans</i>		Trumpet Creeper	1 Gal., 12"-18" Vines	<i>Ficus pumila</i>	Creeping Fig	1 Gal., 12"-18" Vines
<i>Ficus pumila</i>		Creeping Fig	1 Gal., 12"-18" Vines	<i>Gelsemium sempervirens</i>	Carolina Jessamine	1 Gal., 18"-24" Vines
<i>Gelsemium sempervirens</i>		Carolina Jessamine	1 Gal., 18"-24" Vines	<i>Lonicera sempervirens</i>	Coral Honeysuckle	1 Gal., 12"-18" Vines
<i>Lonicera sempervirens</i>		Coral Honeysuckle	1 Gal., 12"-18" Vines	<i>Passiflora incarnata</i>	Passion Flower	1 Gal., 18"-24" Vines
<i>Passiflora incarnata</i>		Passion Flower	1 Gal., 18"-24" Vines	<i>Trachelospermum jasminoides</i>	Confederate Jasmine	1 Gal., 18"-24" Vines
<i>Symphytichum carolinianum</i>		Climbing Aster	1 Gal., 12"-18" Vines			
<i>Trachelospermum jasminoides</i>		Confederate Jasmine	1 Gal., 18"-24" Vines			



Celebration "Florida Friendly"® Plant List

Zone 2: Walls, Fences, Property lines, Foundations						
Plant Category	Botanical Name	Common Name	Specification	Botanical Name	Common Name	Specification
Medium Shrubs						
sun			shade			
	<i>Eugenia foetida</i>	Stopper	3 Gal., 20" Ht. x 18" Spd., Space 30" apart.	<i>Aspidistra elatior</i>	Cast-Iron Plant	3-5 Plants per Pot, Space 24" apart.
	<i>Euryops</i>	Bush Daisy	3 Gal., 18" Ht. x 18" Spd., Space 36" apart.	<i>Hamelia patens 'Compacta'</i>	Dwarf Firebush	3 Gal., 18" Ht. x 18" Spd., Space 24" apart.
	<i>Foretiera segregata</i>	Florida Privet	3 Gal., 20" Ht. x 18" Spd., Space 30" apart.	<i>Illicium parviflorum</i>	Anise	3 Gal., 14" Ht. x 12" Spd., Space 36" apart.
	<i>Hamelia patens 'Compacta'</i>	Dwarf Firebush	3 Gal., 18" Ht. x 18" Spd., Space 24" apart.	<i>Itea virginica</i>	Sweet Spire	3 Gal., 15" Ht. x 18" Spd., Space 30" apart.
	<i>Ilex cornuta 'Burfordii Nana'</i>	Dwarf Burford's Holly	3 Gal., 20" Ht. x 18" Spd., Space 30" apart.	<i>Myrcianthes fragrans 'Compacta'</i>	Dwarf Simpson's Stopper	3 Gal., 20"-24" Ht., Space 36" apart.
	<i>Ilex vomitoria 'Nana'</i>	Dwarf Yaupon Holly	3 Gal., 20" Ht. x 18" Spd., Space 30" apart.	<i>Podocarpus 'Pringles'</i>	Pringles Podocarpus	3 Gal., 12-14" Ht., Space 24" apart.
	<i>Myrcianthes fragrans 'Compacta'</i>	Dwarf Simpson's Stopper	3 Gal., 20"-24" Ht., Space 36" apart.	<i>Rhaphiolepis indica</i>	Indian Hawthorne	3 Gal., 15" Ht. x 18" Spd., Space 30" apart.
	<i>Myrica cerifera 'Pumila'</i>	Dwarf Wax Myrtle	3 Gal., 20"-24" Ht., Space 30" apart.	<i>Raphis excelsa, private area only</i>	Lady Palm	3 Gal., 12" Ht. x 12" Spd., Space 36" apart.
	<i>Podocarpus 'Pringles'</i>	Pringles Podocarpus	3 Gal., 12-14" Ht., Space 24" apart.	<i>Serenoa repens</i>	Saw Palmetto	3 Gal., 24"-30" Ht., Space 48" apart.
	<i>Rhaphiolepis indica</i>	Indian Hawthorne	3 Gal., 15" Ht. x 18" Spd., Space 30" apart.	<i>Strelitzia reginae, private area only</i>	Orange Bird of Paradise	3 Gal., 14" Ht. x 12" Spd., Space 36" apart.
	<i>Spartina bakeri</i>	Sand Cordgrass	3 Gal., 24"-30" Ht., Space 48" apart.	<i>Tripsacum dactyloides</i>	Fakahatchee Grass, Eastern Gamagrass	3 Gal., 24"-30" Ht., Space 48" apart.
	<i>Tripsacum dactyloides</i>	Fakahatchee Grass, Eastern Gamagrass	3 Gal., 24"-30" Ht., Space 48" apart.			
	<i>Vaccinium darrowii</i>	Darwin's Blueberry	3 Gal., 12" Ht. x 12" Spd., Space 30" apart.			
	<i>Viburnum obovatum 'Densa'</i>	Dwarf Walter's Viburnum	3 Gal., 16" Ht. x 16" Spd., Space 30" apart.			
Large Shrubs						
sun			shade			
	<i>Acca sellowiana</i>	Pineapple Guava, Feijoa	7 Gal., 20" Ht. x 20" Spd., Space 36" apart.	<i>Acca sellowiana</i>	Pineapple Guava, Feijoa	7 Gal., 20" Ht. x 20" Spd., Space 36" apart.
	<i>Bambusa textilis 'Gracilis'</i>	Slender Weaver Bamboo	7 Gal., 10'-12' Ht., Space 5' apart.	<i>Bambusa textilis 'Gracilis'</i>	Slender Weaver Bamboo	7 Gal., 10'-12' Ht., Space 5' apart.
	<i>Bambusa multiplex 'Fernleaf'</i>	Fernleaf Bamboo	7 Gal., 5'-7' Ht., Space 5' apart.	<i>Bambusa multiplex 'Alphonse Karr'</i>	Alphonse Karr Bamboo	7 Gal., 5'-7' Ht., Space 5' apart.
	<i>Bambusa multiplex 'Alphonse Karr'</i>	Alphonse Karr Bamboo	7 Gal., 5'-7' Ht., Space 5' apart.	<i>Cephalanthus occidentalis</i>	Buttonbush	7 Gal., 36" Ht., Space 36" apart.
	<i>Cephalanthus occidentalis</i>	Buttonbush	7 Gal., 36" Ht., Space 36" apart.	<i>Gardenia jasminoides</i>	Gardenia, Cape Jasmine	7 Gal., 36" Ht., Space 30" apart.
	<i>Hamelia patens</i>	Firebush	7 Gal., 36" Ht., Space 30" apart.	<i>Hamelia patens</i>	Firebush	7 Gal., 36" Ht., Space 30" apart.
	<i>Hydrangea quercifolia</i>	Oakleaf Hydrangea	7 Gal., 36" Ht., Space 30" apart.	<i>Illicium floridanum</i>	Florida Anise, Anise, Purple Anise	7 Gal., 36" Ht., Space 30" apart.
	<i>Ilex cornuta 'Burfordii'</i>	Burford's Holly	7 Gal., 36" Ht., Space 30" apart.	<i>Illicium parviflorum</i>	Anise	7 Gal., 36" Ht., Space 30" apart.
	<i>Ilex vomitoria</i>	Yaupon Holly	7 Gal., 36" Ht., Space 30" apart.	<i>Jasminum multiflorum</i>	Downy Jasmine	7 Gal., 36" Ht., Space 30" apart.
	<i>Illicium floridanum</i>	Florida Anise, Anise, Purple Anise	7 Gal., 36" Ht., Space 30" apart.	<i>Ligustrum japonicum</i>	Ligustrum	7 Gal., 36" Ht., Space 36" apart.
	<i>Illicium parviflorum</i>	Anise	7 Gal., 36" Ht., Space 30" apart.	<i>Loropetalum chinense</i>	Loropetalum	7 Gal., 36" Ht., Space 36" apart.
	<i>Jasminum multiflorum</i>	Downy Jasmine	7 Gal., 36" Ht., Space 30" apart.	<i>Myrcianthes fragrans</i>	Simpson's Stopper	7 Gal., 30" Ht., Space 36" apart.
	<i>Ligustrum japonicum</i>	Ligustrum	7 Gal., 36" Ht., Space 36" apart.	<i>Podocarpus gracillior</i>	Fern Leaf Podocarpus	7 Gal., 3'-4' Ht., Space 24" apart.
	<i>Myrcianthes fragrans</i>	Simpson's Stopper	7 Gal., 30" Ht., Space 36" apart.	<i>Podocarpus macrophyllus</i>	Podocarpus	7 Gal., 3'-4' Ht., Space 24" apart.
	<i>Myrica cerifera</i>	Wax Myrtle	7 Gal., 36" Ht., Space 30" apart.	<i>Podocarpus microphyllus</i>	Maki Podocarpus	7 Gal., 3'-4' Ht., Space 24" apart.
	<i>Podocarpus gracillior</i>	Fern Leaf Podocarpus	7 Gal., 3'-4' Ht., Space 24" apart.	<i>Sabal minor</i>	Dwarf Palmetto	7 Gal., 20"-24" Ht., Space 48" apart.
	<i>Podocarpus macrophyllus</i>	Podocarpus	7 Gal., 3'-4' Ht., Space 24" apart.	<i>Serenoa repens 'Silver'</i>	Silver Saw Palmetto	7 Gal., 20"-24" Ht., Space 48" apart.
	<i>Podocarpus microphyllus</i>	Maki Podocarpus	7 Gal., 3'-4' Ht., Space 24" apart.	<i>Ternstroemia gymnanthera</i>	Cleyera, Ternstroemia	7 Gal., 36" Ht., Space 36" apart.
	<i>Vaccinium arboreum</i>	Sparkleberry	7 Gal., 30" Ht. x 18" Spd., Space 30" apart.			
	<i>Viburnum obovatum</i>	Walter's Viburnum	7 Gal., 36" Ht., Space 36" apart.			
Zone 3: Water Saturated Areas						
Plant Category	Botanical Name	Common Name	Specification	Botanical Name	Common Name	Specification
Medium Shrubs						
sun			shade			
	<i>Arachis glabrata</i>	Perennial Peanut	1 Gal., Space 24" apart.	<i>Hymenocalis</i>	Spider Lily	1 Gal., 8"-12" Ht., Space 12" apart.
	<i>Canna indica</i>	Florida Canna Lily	1 Gal., Space 24" apart.	<i>Sisyrinchium angustifolium</i>	Blue Eyed Grass	1 Gal., 14" Ht., Space 12" apart.
	<i>Hymenocalis</i>	Spider Lily	1 Gal., 8"-12" Ht., Space 12" apart.			
	<i>Pontaderia cordata</i>	Pickerelweed	4" Container, 24" O.C.			
	<i>Sisyrinchium angustifolium</i>	Blue Eyed Grass	1 Gal., 14" Ht., Space 12" apart.			
	<i>Spartina bakeri</i>	Sand Cordgrass	3 Gal., 24"-30" Ht., Space 48" apart.			
	<i>Spartina patens</i>	Salt Marsh Cordgrass	3 Gal., 24"-30" Ht., Space 48" apart.			
	<i>Tulbaghia violacea</i>	Society Garlic	1 Gal., 8" Ht. x 8" Spd., Space 30" apart.			



<http://www.dep.state.fl.us/springs/>

<http://extension.ifas.ufl.edu/>

<http://fyn.ifas.ufl.edu/>

<http://www.swfwmd.state.fl.us/yards/>

<http://www.floridayards.org/>

